

cotton lace ponchette

pattern note

- This pattern are quite flexible, you can adjust the knit sts at the beginning to have more eyelet lace or less.
- The lace pattern basically is a combination of basic repeated row 1- 6. You can adjust the amount of eyelet row as you wish with ending of the last four row : 15th to 18th row .(This will ensure you to have the V edge)
- If you are using worst weight or wanted less lacy you can skip a few repeated rows (be sure to adjust the knit sts at beginning of row)
- With worst weight yarn you might also have to cast on fewer sts, just be sure to check on you gauge or do a swatch before start to knit.
- You can adjust the height and the lenght according to your size by reduce the cast on sts.

direction

Yarn : Katia Nilo or any fine yarn (about 5 balls of 142 yds)
Needle : 3 – 3.5mm
Gauge : 23 sts x 30 row over 10cm x 10cm
Size : 53" long x 17" height (Retangular)

Cast on 98 sts, Knit 1 row

1st row : k58, * yo, k2tog,* repeat until last two sts, yo twice, k2
2nd row : k3, drop the next sts off (2nd loop of double yarn over on previous row), k to end
3rd row : k59, * yo, k2tog,* repeat until last two sts, yo twice, k2
4th row : Repeat 2nd row
5th row : k60, * yo, k2tog, yo * repeat until last two sts, yo, k2
6th row : k to end

7th row : k61, * yo, k2tog,* repeat until last two sts, yo twice, k2
8th row : Repeat 2nd row
9th row : k62, * yo, k2tog,* repeat until last two sts, yo twice, k2
10th row : Repeat 2nd row
11th row : k63, * yo, k2tog, yo * repeat until last two sts, yo, k2
12th row : k to end

13th row : k64, * yo, k2tog,* repeat until last two sts, yo twice, k2
14th row : Repeat 2nd row
15th row : k65, * yo, k2tog,* repeat until last two sts, yo twice, k2
16th row : Repeat 2nd row
17th row : k to end
18th row : bind off 8sts, k to end

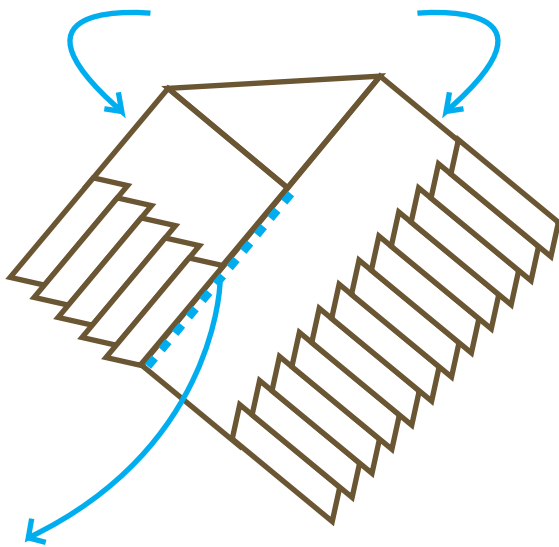
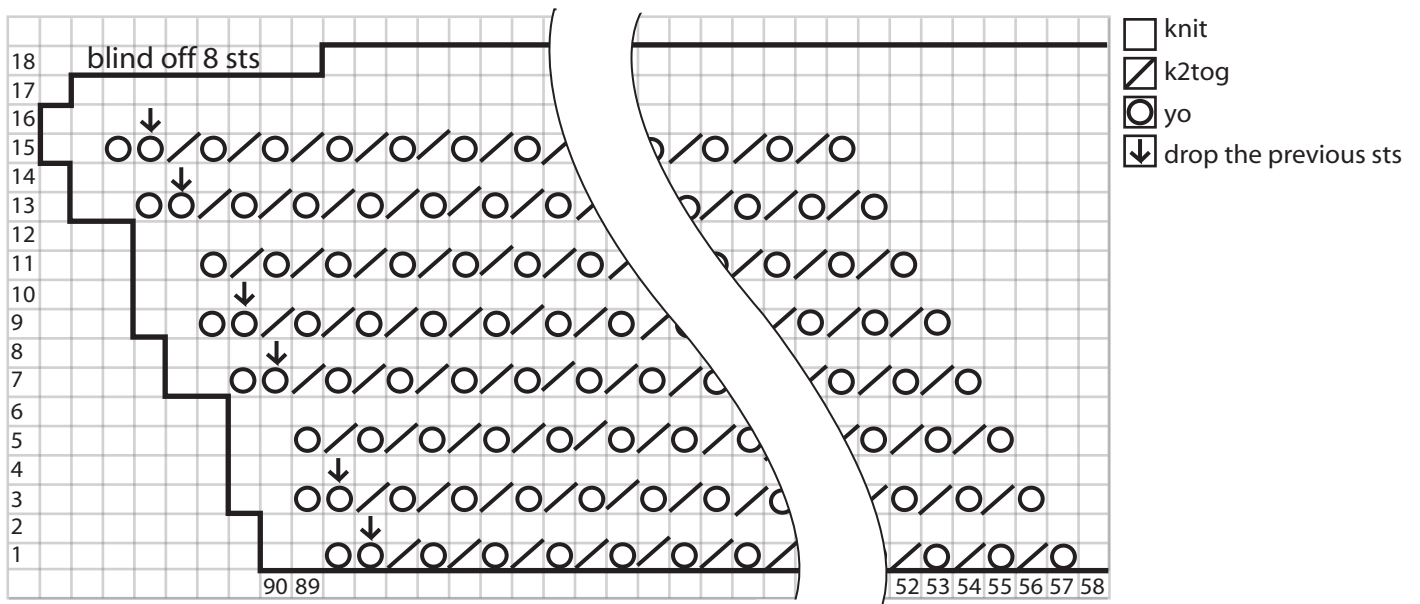
Repeat the pattern above to desire length.

cotton lace ponchette

finishing

BO all stitch. With yarn threaded on tapestry needle, sew short end of rectangle to one end of long side. Weave in loose end.

pattern chart



With yarn threaded on tapestry needle, sew short end of rectangle to one end of long side. Weave in loose end.